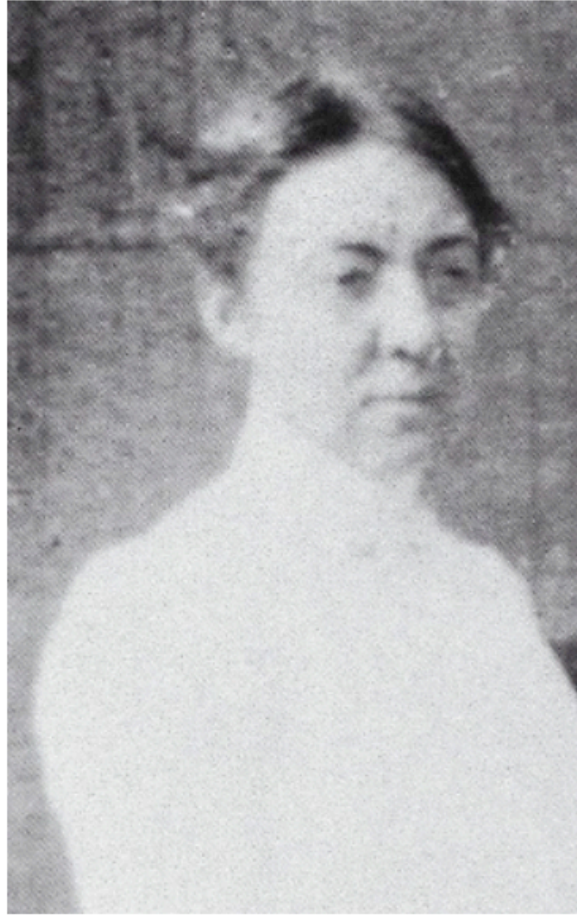


CLARA DRISCOLL ³



“Allow me to introduce you to Mrs. Driscoll. She’s head of my Women’s Department.”

SOIREE²⁸



"Mr. Wilder had been extremely attentive at the beginning of the evening when Flossie pointed out the Astors, the Vanderbilts, the Roosevelts, and, of course, the Tiffanys."

GAME CARD ¹³



"Clearly, she was not going to give him the kind of questions she gave everyone else, like when did you last climb a tree?"

LAMP LIGHTER⁵²



"A lamp lighter on the street lifted a long pole and ignited a stem on a lamppost, the flame just discernable in the onset of evening shadows."

DINING CAR ²⁵



“I’ll be eating in its fancy dining car and sleeping in an actual *berth*.”

WOMEN BOARDING STREETCAR⁴³



"Bustle pinchers were a real problem, but it wasn't until 1909 before women were given their own car."

WORLD'S COLUMBIAN EXPOSITION ²⁶



“On every side, every horizon, were colossal white palaces, gilded domes, lofty pillars, decorative statues, and curved bridges.”

*DRAGONFLY LAMP³⁸



“Along the bottom edge ten dragonflies with wings fully spread headed downward as if they would burst from the shade at any moment.”

ICE SKATING IN CENTRAL PARK¹⁴



"Stretching out his legs, Reeve crossed his ankles and leaned back on the bench, content to watch the others do all the skating."